

Horizon

POSTPRESS MANAGEMENT SYSTEM

ICE LiNK

Manage your bindery with ICE LiNK.



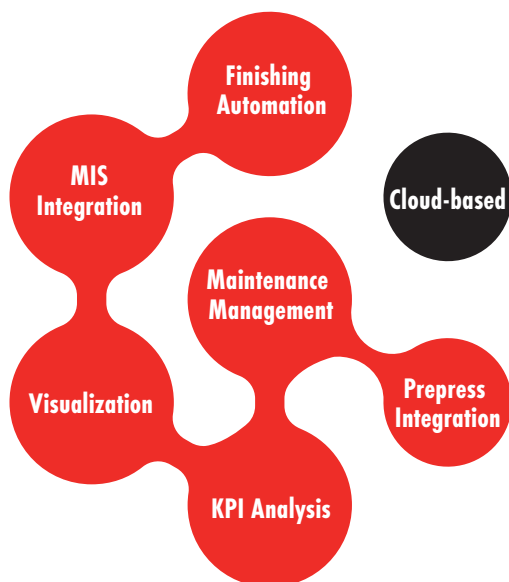
OPTIMIZE YOUR WORKFLOW TO IMPROVE PRODUCTION AND INCREASE EFFICIENCY.

The iCE LiNK Post-press Management System enables the centralized management of binding and postpress equipment using cloud technology.

With precise analysis results from the KPI*1 analysis function, iCE LiNK reduces costs, provides productivity visibility, and automates workflow by integration to MIS and prepress.

*1 KPI stands for Key Performance Indicator. A KPI is an indicator used to evaluate the degree of achievement of an organization's goals.

SIX KEY POINTS OF ICE LINK



i = Intelligence, Integration, Interaction
C = Connection
E = Efficiency

ICE LINK HELPS SOLVE THESE CHALLENGES



1. Visualization of the Production Process.



2. Postpress Analysis and Management



3. Workflow Automation



4. Integration with Prepress Workflow

1. PRODUCTION PROCESS VISUALIZATION.

Real-time data management is necessary to make daily finishing operations more productive. Cloud-based data management enables better and faster decision making, which in turn improves the bindery environment.

Track machine operating status

Detailed visualization of plant operations with near real-time results for transparency and attention to detail. Collaboration between Operators and Managers iCE LiNK provides analytical functions based on specific data, such as recorded operating performance.

iCE LiNK provides analytical functions based on specific data, such as recorded operating results.

*Scheduling requires Enterprise.



Dashboard

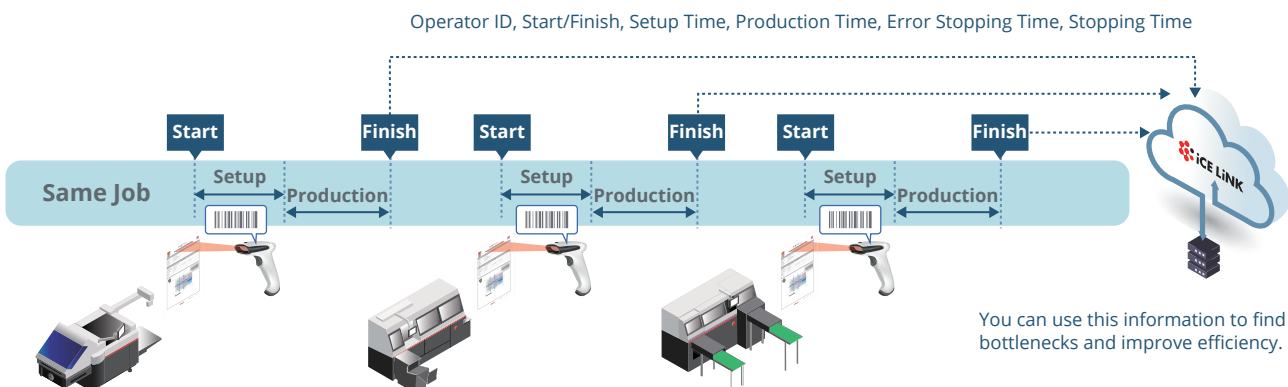


Scheduling

Track job progress with barcodes

Data can be collected on a job-by-job basis by reading job information and other data with barcodes. Analysis by process, such as folding, binding, and cutting in the bookbinding process and cutting in the finishing process.

In addition, the system supports the creation of daily work reports by managing the history of each operator.



2. POSTPRESS ANALYSIS AND MANAGEMENT.

Horizon binders are designed to maximize performance and work efficiency. iCE LiNK allows you to take advantage of the information you need to do so.

KPI analysis (Jobs, Operators, Number produced, etc.)

KPI analysis enables continuous operational improvement and assists in generating better insights. Enhanced status monitoring and control via web browser or tablet. It also gives you access at any time to the process information you need to improve your operations and business opportunities.



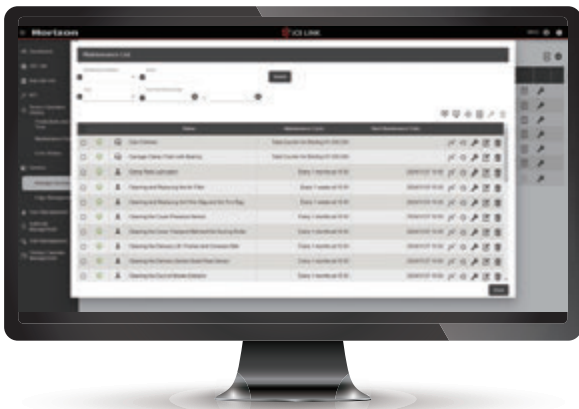
Comparative Analysis



Worker Analysis

Maintenance management

Impacts on bindery productivity include production volume, availability, failures, restarts, and consumable life. With detailed information on each of these KPIs, higher level of visibility. iCE LiNK can be deployed across multiple bindery operations to facilitate informed decision making, improving production efficiency, uptime, and performance.



Maintenance History



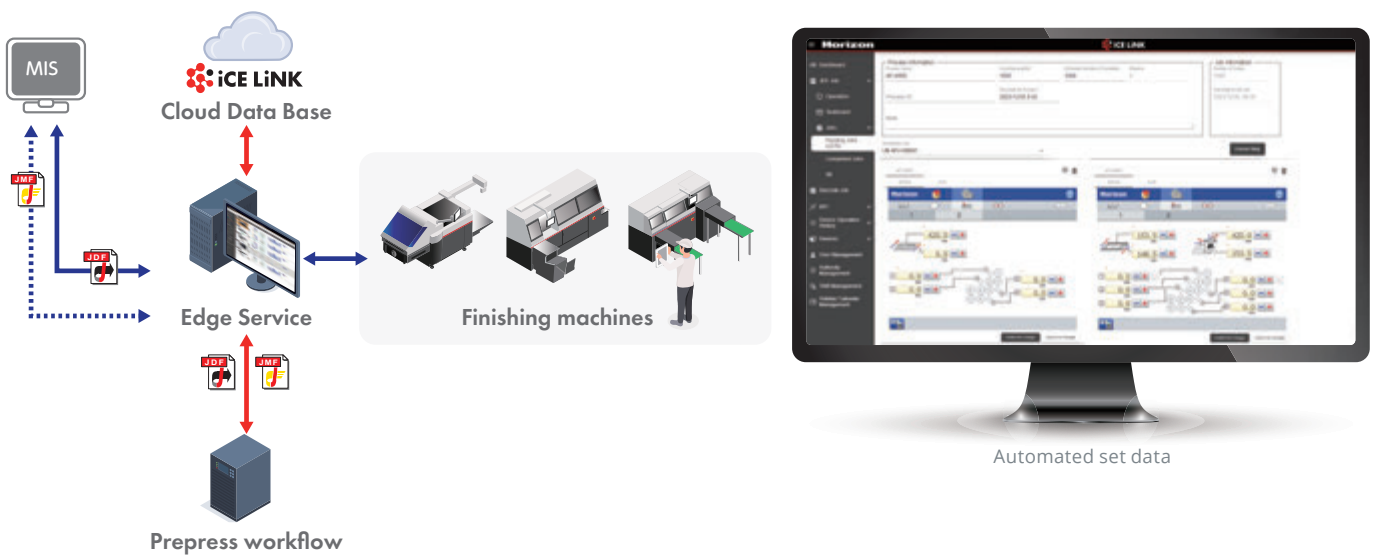
Error History

3. AUTOMATION WORKFLOW.

Automating the binding workflow has the effect of eliminating touch points. Integration with the MIS and prepress workflow is essential to maximize this effect. The system helps the operator understand the binding process and automates the changeover between the binding machine and the finishing machine.

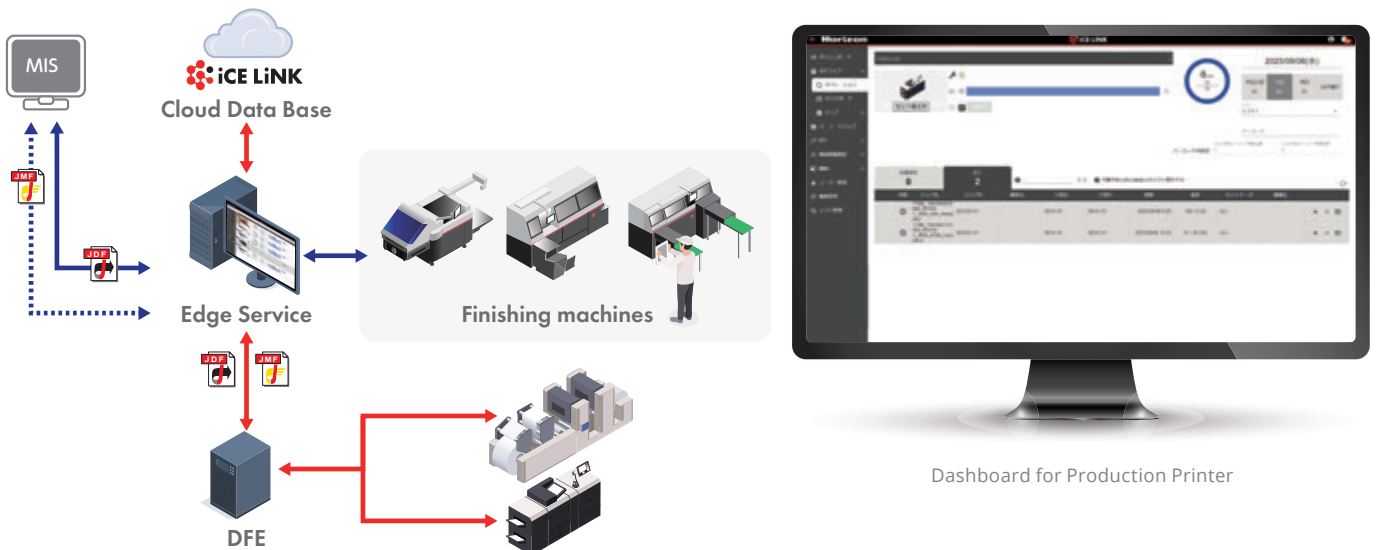
Integration with MIS and Prepress Automation Enterprise

When iCE LiNK is integrated with an MIS, the MIS provides the necessary information for finishing operations. With this information, like final size and piece count, iCE LiNK assigns Horizon devices based on corresponding processing instructions. Additionally, integration with the prepress workflow allows for processing instructions based on imposition data, making automated machine changeovers a reality.



Monitor the operational status of production printers and offset presses Automation Enterprise

For both offset and digital printing, finishing is a necessary process. iCE LiNK can capture and display the operating information of the previous process in a dashboard. Similarly, operation results can be accumulated in iCE LiNK.



4. PREPRESS WORKFLOW INTEGRATION.

Seamless workflow with Ultimate solutions



AUTOMATION IMPOSITION WORKFLOW

- Designed with productivity in mind, Ultimate Impostrip® is easy-to-use, versatile software that optimizes every aspect of the Prepress imposition workflow.
- It optimizes every aspect of the prepress imposition workflow.



AUTOMATED SETUP OF FINISHING DEVICE

- Ultimate Bindery® is an open JDF server that validates jobs and automatically sends processing instructions to the finishing device.
- Information between the Prepress workflow and the bindery.



Reduce preparation setup and eliminate bottlenecks



Validate jobs before printing to reduce costs and waste



Consistent setup every time accuracy is improved by performing improved accuracy



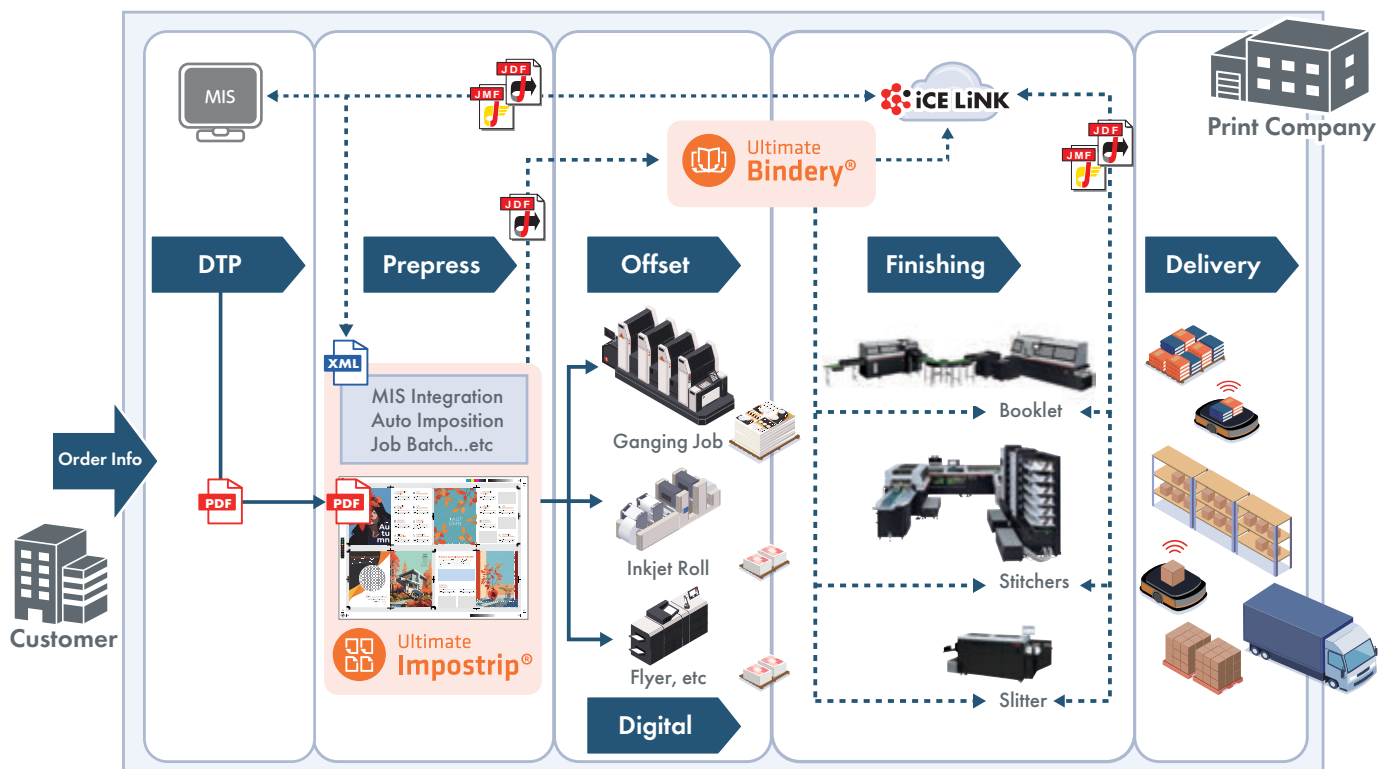
Open solution for all workflows

End-to-end workflow with Ultimate TechnoGraphics and iCE LiNK

It provides imposition in conjunction with MIS and various print applications, and iCE LiNK can instruct setup information for binding and finishing machines from the imposition information.

By providing an end-to-end workflow, iCE LiNK offers high productivity and a high degree of automation.

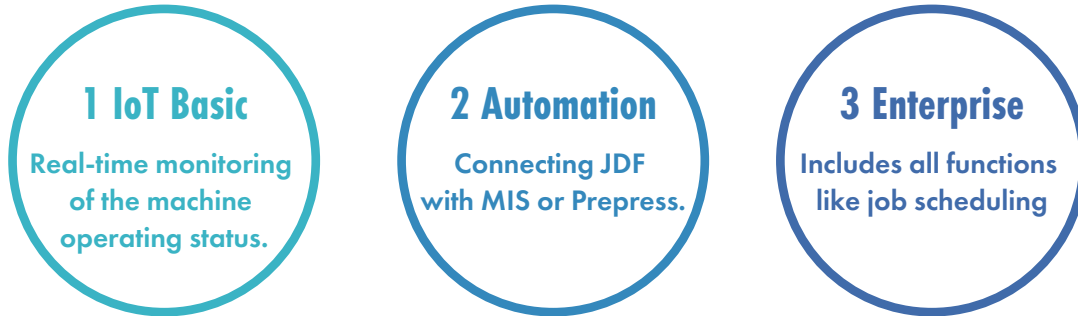
iCE LiNK requires either Automation or Enterprise.



THREE EDITIONS

iCE LiNK is a subscription service with minimal startup costs. There are three editions to choose from and IoT Basic is the most basic model. If you need to expand the system after installation, you can upgrade to a higher edition.

*Specifications are subject to change.



FUNCTION		1 IoT basic	2 Automation	3 Enterprise*1
Device Management	Dashboard	✓	✓	✓
	Maintenance Notification	✓	✓	✓
	Production Printer Dashboard	-	✓	✓
	Offset Printer Dashboard	-	✓	✓
KPI Analysis	Overall Equipment Effectiveness	✓	✓	✓
	Job Analysis	✓ *2	✓	✓
	Operator Analysis	✓ *2	✓	✓
Workflow	Web API with External System	-	✓	✓
	* Detailed job report can be posted to external device for job analysis.	-	✓	✓
	Barcode Jobs	✓	✓	✓
	JDF/JMF Workflow	-	✓	✓
	Create / Edit / Delete JDF jobs	-	-	✓
	Job scheduling	-	-	✓

*1 On-premises version which does not send any data to cloud server is only available for the Enterprise edition. Ask your local dealer for details.

*2 CSV data output only.

COMPUTER SPECIFICATIONS.

EDGE COMPUTER		CLIENT TERMINAL		SERVER COMPUTER	
Processor	Intel Core i3 Processor or above is recommended	Terminals	Windows computers, Macs, and tablets that can use one of the following browsers	Processor	Intel Core i7-8550U 1.8GHz Processor
Operating System	Windows 10 Pro Version 20H2 or above NET Framework Version 4.7.2 or above	Compatible Browsers	Google Chrome: V. 83 or above Microsoft Edge: V. 44 or above	Operating System	Windows Server 2019 Standard or above
RAM	at least 4 GB (8 GB is recommended.)	Monitor	1,920 x 1,080 pixels or higher	RAM	16.0 GB
HDD	at least 120 GB			HDD	at least 1 TB
Monitor	1,280 x 1,024 pixel or higher			Monitor	1,280 x 1,024 pixel or higher
Number of devices per license	20 Horizon devices				

*For the on premises version, a server computer is required in addition to the edge computer and client terminal.

*Up to 20 devices can be connected per 1 main license.

MORE AT
HORIZON.CO.JP



Horizon

Horizon International Inc.

1601 Asahi, Shinasahicho, Takashima,
Shiga, 520-1501, Japan
Phone : +81-740-25-4570
Fax : +81-740-25-5820
www.horizon.co.jp

Horizon GmbH

Pascalstrasse 20
25451 Quickborn / Germany
Phone : +49 4106 8042-0
Fax : +49 4106 8042-199
www.horizon.de